

# ECOAIR - ENVIAIR

## Automatic monitoring of soil degradation by satellite



Universidade do Estado do  
Rio de Janeiro (UERJ) [www.desc.eng.uerj.br](http://www.desc.eng.uerj.br)



Empresa Brasileira de Pesquisa  
de Solos (EMBRAPA SOLOS) [www.cnps.embrapa.br](http://www.cnps.embrapa.br)



Institut National de Recherche  
en Informatique et en Automatique (INRIA, CLIME project) [www-rocq.inria.fr/clime](http://www-rocq.inria.fr/clime)



The ECOAIR and ENVIAIR projects are supported by the INRIA-CNPq programme and by a Alban master scholarship.

## Description

### Study Area

High Taquari basin (tributary to Pantanal) where soil degradation is caused by agricultural practices and cattle breeding.

### Objectives

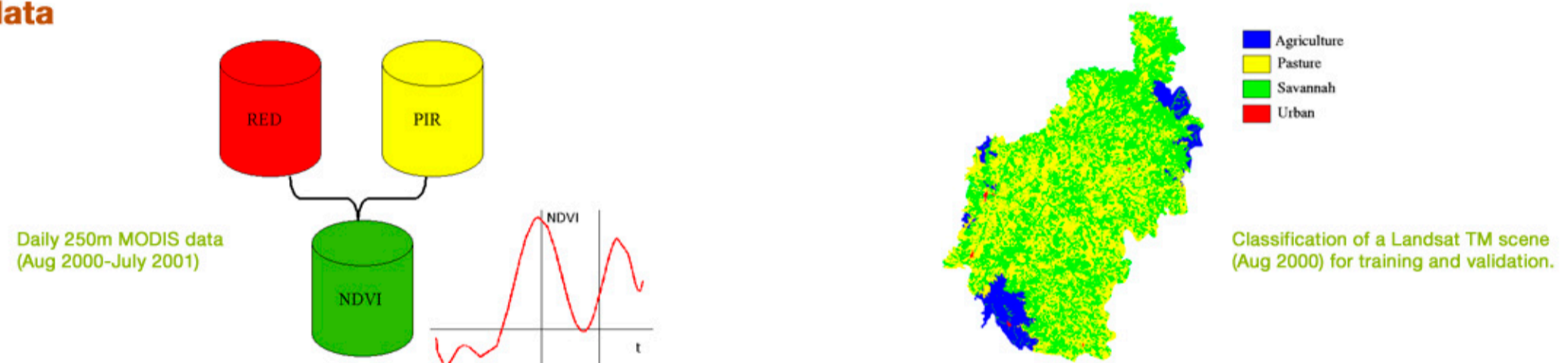
Monitoring land use/land cover changes by analysis of time-series of MODIS data with 250m resolution. MODIS data enable application to very large areas at low cost.

Analysis of vegetation indices (NDVI) on a daily basis. NDVI time-series are characterized in a space of meaningful parameters.

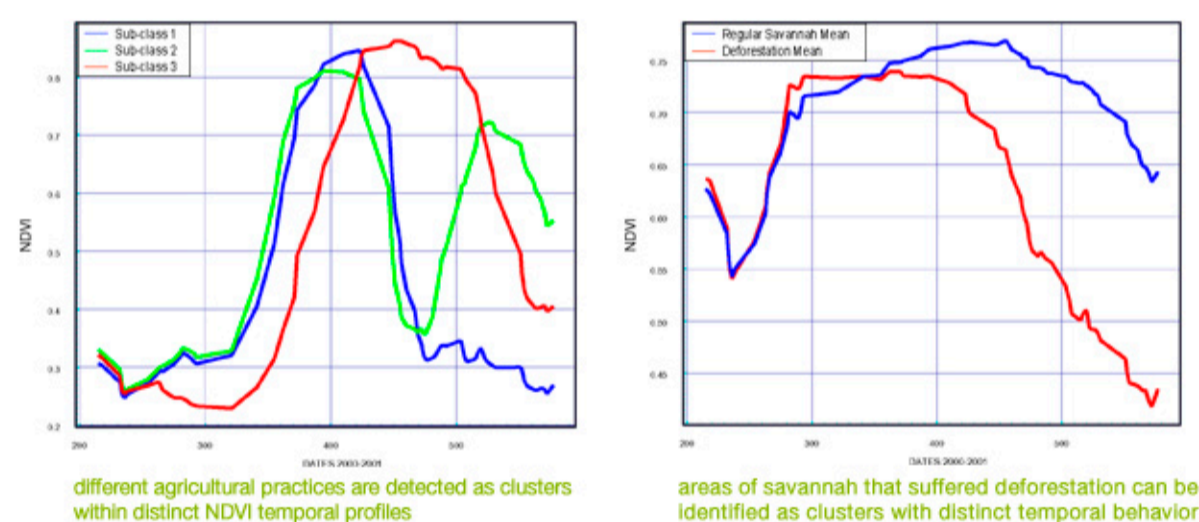
Land use/land cover is classified in the latter space, that characterises temporal behavior.

Deforestation is observed in this space, since it corresponds to a quick decrease of NDVI.

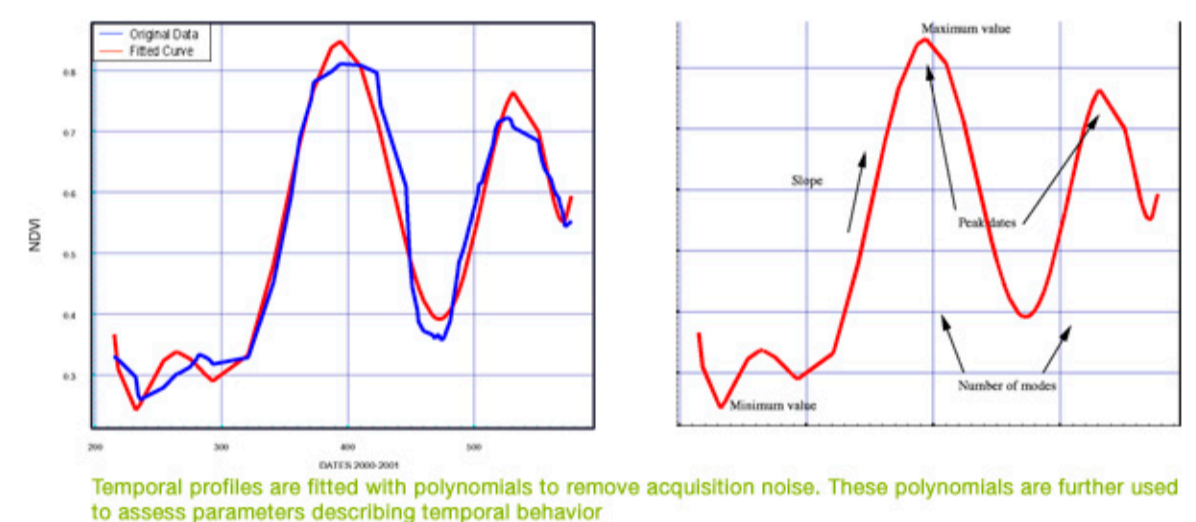
### Available data



### Methodology: identification of temporal behavior classes



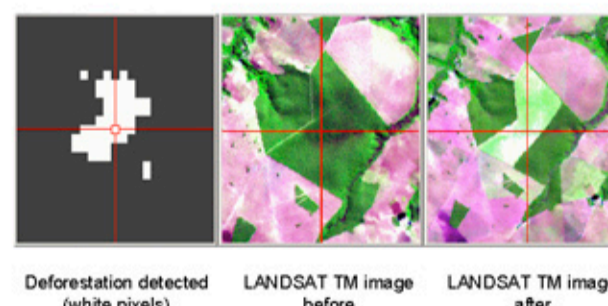
### Methodology: characterization of temporal profiles



## Results

The classification of MODIS time-series yielded an overall 84% accuracy as compared to Landsat TM classification: suitable for analysis of large areas.

Concerning deforestation: no ground truth, validation by visual inspection of Landsat TM images. The vast majority of detected deforestation areas were correct. Can be used as an environmental alert system.



## Common publications

M. Jonathan, M.S. Mereilles, J.P. Berroir, I. Herlin, H.L. Coutinho

**Regional scale land use/land cover classification using temporal series of MODIS data at the High Taquari basin, MS, Brasil.**  
XII Simposio Brasileiro de Sensoriamento Remoto, 2005.

M.S. Mereilles, G.A. Coste, D. Singh, J.P. Berroir, I. Herlin, E.F. Silva, H.L. Coutinho

**A methodology to support the analysis of environmental degradation using NOAA-AVHRR data.**  
Int. Soc. for Photogrammetry and Remote Sensing, 2004.